

Ashbourne Church News 03/05/2026



Welcome to this Week's Newsletter

Church and Parish Office Opening Times

St Oswald's Church is open daily from 10am to 5pm

- *Bell Ringing Practice: Wednesday evenings from 19.30 to 21.00*
 - *Choir Practice: Friday evenings from 19.00 to 20.00*
-

The Parish Office is open

- *Monday, Wednesday and Friday from 10:00 to 12:00*
-

Telephone: 01335 343052

If you need a priest urgently, please call 01335 664159.

Pastoral Contact

If you would like to contact a member of the clergy team to discuss any pastoral matter please telephone 01335 664159.

Ministry Thought for the Week

On This Day

Whilst pondering on what to write this week I came across this verse by H W Hunter which moved me deeply.

“Mend a quarrel. Search out a forgotten friend.

Dismiss suspicion and replace it with trust.

Write a love letter. Share some treasures.

Give a soft answer. Encourage youth.

Manifest your loyalty in a word or deed.

Keep a promise. Find the time.

Forego a grudge. Forgive an enemy.

Listen. Apologise if you were wrong.

Try to understand. Flout envy.

Examine your demands on others.

Think first of someone else.

Appreciate, be kind, be gentle.

Laugh a little more. Deserve confidence.

Take up arms against malice. Decry complacency.

Express your gratitude. Worship your God.

Gladden the heart of a child.

Take pleasure in the beauty and wonder of the earth.

Speak your love. Speak it again.

Speak it still again. Speak it still once again.”

My prayer is that you notice the beauty around you, the small joys of everyday life, and the simple goodness and love we can offer one another, so that the peace we long for in our world will grow persistently among us.

Blessings

Maggie



What's New

Carers Count at Fairways Garden Centre



If you care for a loved one and would like to meet others in a similar situation for a chat over a cup of tea or coffee, you would be so welcome. Just pop along.

Usually the meetings are on the first Wednesday of the month in The Church Hall, 10 am until 12 noon. But, due to holidays, our NEXT MEETING WILL BE HELD ON 13th MAY at Fairways Garden Centre, 10 am until 12 noon in the restaurant.

Bells for Birds

Bells are rung on a specific date in early May, between 2nd - 10th, across Derbyshire, to highlight the Swifts' return to the UK after their long migration. St Oswald's will dedicate the ringing of the bells this Sunday evening to the return of the swifts.

Find out more about [Bells for Birds](#).

DERBY NATURE COLLECTIVE

Bells for Birds

2-10 May 2026

Together, we can celebrate Swifts
returning to Derbyshire.



Credit: Nick Upton

How to celebrate Swifts this year:

- Eyes to the skies – watch for Swifts arriving from Africa in May
- Let us know you have spotted a Swift by posting a picture on social media with #BellsforBirds
- Log your sightings on our Swift Map (head to our webpage using the QR code below)
- Encourage your local church, school or community group to celebrate - And ring their bells!
- We'd love to see local parades, posters and art celebrating Swifts
- Give a Swift a home – install nest boxes, Swift bricks, and grow insect-friendly gardens



For more information
scan here

<https://www.derbyshirewildlifetrust.org.uk/bells-birds>



St Aelred's Pilgrim Trail

The walking group is currently walking the St Aelred's Pilgrim Trail (1st to 8th May). This is a 41 mile pilgrimage linking the 9 churches of Upper Ryedale and Helmsley with Rievaulx Abbey. Aelred of Hexham was a Cistercian monk and from 1147 – 1167 he was Abbot of Rievaulx. He wrote on Christian friendship and was gifted with wisdom to lead.

Look out for updates from the Pilgrim Trail.



Churchyard Bench - Jack Scanlon

It isn't first the bench you see,
but how it draws the weary near,
as if it hums so quietly

that only broken hearts can hear.

It stands between the path and stone,
not facing fully loss or grace,
a thing that's never quite alone,
yet keeps a careful, silent place.

Its wood is worn by years of hands,
by those who came with more than breath,
who sat where no one understands
the quiet, stubborn weight of death.

A woman once in winter stayed,
her shadow long, her body still,
as if to move might start to fade
what little memory could fill.

And others come, then leave too soon—
a restless step, a half-held cry,
a whispered name beneath the moon,
a question no one can reply.

The bench does nothing grand or wise,
it does not mend what has been torn,
yet something in its stillness lies
that lets the heaviest grief be borne.

One slat is split, one arm is worn,
it bends where time has pressed too deep,
the marks of something pulled and torn
by all the weight it chose to keep.

It has been mended, that is clear—
a join where careful hands have been,
not to erase the break that's there,
but help the wood hold fast again.

And so it will be mended still,
not as a sign it failed its part,
but proof that time and patience will
can hold together what will part.

For grief will find the smallest seam,
and press until the fibres give,
yet leave behind a fragile gleam—
a way for broken things to live.

So here it stands, both scarred and strong,
not as it was, but as it's been,
and those who sit don't stay as long
as something shifts, unseen, within.

They rise with less they cannot name,
though nothing's truly put to rest—
just that they did not bear the same
full weight alone... on this worn, churchyard bench.



Let's Picnic Together - 12th July

A colorful illustration of a diverse group of people of various ages and ethnicities having a picnic on a striped blanket in a park. There are trees and a picnic basket in the scene.

Ashbourne Churches Together

Joining together at Ashbourne Festival Picnic in the park.

LET'S PICNIC TOGETHER!

PACK YOUR PICNIC AND JOIN US FOR A WONDERFUL TIME TOGETHER!

SUNDAY, 12TH JULY

The picnic will be held from 1pm

Location:
Ashbourne Memorial Gardens

Free Dementia Training



Become a Dementia Friend

Join us for a free Dementia Friends Session delivered by one of our volunteer Dementia Friends Ambassadors. During this friendly and interactive session, you'll learn more about dementia, how it affects a person and what you can do to help people affected by dementia in your community.

Date	Tuesday 19th May 2026	Wheelchair accessible?	<input checked="" type="radio"/> Yes <input type="radio"/> No
Start time	19:00	Other information	
Duration	1h 30m		Paid Parking is available in the Leisure Centre Car Park, Clifton Road, DE6 1DR
Venue	The Link Centre Station Road Ashbourne DE6 1AA		Refreshments will be available from 6.30pm

How to book onto the session:

Booking is required by midday on Friday 15th May so that we can ensure we have enough resources for everyone. Contact Ruth at booking@ashbournemethodist.org.uk for more information or to book your place.

Furniture Donations for our new curate!

Our new curate, Rachel Knight, will move into the diocesan property in Clifton in late May. She and her husband (Alan) are moving from a canal boat, so they will have no furniture. They won't need crockery or kitchen items, just large furniture (as all the furniture in a canal boat is fitted and secured to the walls). Do you have any furniture sitting around that you might want to donate? This might be the time to consider refurbishing a room, getting that new sofa or new bed, and then donating the old one to Rachel and Alan! Please let Nicola in the office know if you have anything you can donate. We'll work out how to pick that up/collect it once we have a comprehensive list closer to the date. Thank you for supporting Rachel as she joins us!

Bishop Francis from the Church of North India visiting on Sunday 12 July

The Ashbourne Churches Together (ACT) have an ecumenical partnership with the Diocese of Patna. Bishop Francis, their bishop, is joining us in July for two weeks. He'll be with us on Sunday 12 July and with Ashbourne Methodists on Sunday 19 July. The Church of North India (CNI) is a United Church formed when the Anglican, Methodist Baptist and Presbyterian Churches in North India joined together. CNI calls on a mixture of traditions from the joining Churches for its governance and its worship. More info to come soon as we look to actively relaunch St Oswald's involvement supporting the ACT – Patna partnership!

Hosting Diocesan Choral Festival

Plan to join us at Evensong on Sunday 14 June for the Diocesan Choral Festival with choirs from across the diocese, including the Derby Cathedral choirs, will be with us!

Christian Aid Week

It's coming up to **Christian Aid week 2026** and the cake stall at **Tissington Well Dressings**, both in the same week!

This is our shared moment to come together with friends from other Ashbourne churches to stand alongside people living in poverty around the world.

Would you be able to help again this year? Or for the first time if you've not been involved before? There are lots of ways to help.

Please can you let **Catherine Green** (catherine@birchlodge.uk) know if:

1. You are available for a few hours between **10th and 16th May** to **deliver Christian Aid envelopes** to houses in Ashbourne?
2. You would be willing for **your letterbox to be used as a drop-off point** for people to bring their filled envelopes to? (The last few years we have not knocked on doors to collect envelopes, but have instead offered a network of local letterboxes that people who want to give can drop their donation off at. We have found that we can raise the same amount of money this way, as long as we cover enough of the town. You'll be given a poster to display near your letterbox to reassure people they have the right house)
 1. You would be willing to also **knock on doors to collect envelopes**? We know that we get a lot more money from certain streets this way, but it does take longer and some people don't like it
 1. You could **bake a tray-bake or cake** to sell at Tissington Well Dressings from 14th to 17th May?

1. You could **staff the cake stall** for a 2-hour slot between **14th to 17th May**? A great opportunity to see the Well Dressings too.

You could also **sponsor Janet Wright**, who will walk **'70K in May'** (Sponsor Form in Church).



The Bereavement Journey at Elim Church

Grief is hard.
Death can impact
all of life.

The Bereavement
Journey
a place to talk

7 Sessions of films
and discussion
for anyone bereaved anytime

Topics include:

- Attachment, separation and loss
- The pain and responses of grief
- Anger and guilt
- Coping with others' reactions
- Delayed and suppressed grief
- Adjusting to change
- Moving forward healthily
- Faith questions – a Christian perspective (optional)

To find out more visit:
thebereavementjourney.org

Running soon:

Starting 11 May 2026
7 - 9pm
at
Ashbourne Elim Church
DE6 1DG

For more info or to book
your place please email:
hope@ashbourneelim.church

Church Services, Readings and Music

Weekly Online Service

Weekly Online Service

Each week a recorded service is prepared which can be streamed from the church [YouTube channel](#).

The service is normally recorded in one of the churches in the Ashbourne Group on the Thursday prior to the Sunday.

Recorded Services

This week's recorded service can be downloaded using the following link:

[Morning Prayer for Easter 5 from St.Oswald's](#)

The next recording will be a Holy Communion service and will be recorded on Thursday 7th May at St Mary's, Mappleton

starting at 10:30am prompt. Everyone is welcome to join the recording.

Services

Find Services and Events in the Calendar

All of the Ashbourne Group of Churches services can be found on the website in the [Calendar](#).

You can also see forthcoming events taking place in Church and in the Church Hall.

May Services

ASHBOURNE GROUP OF CHURCHES

Everyone is WELCOME at any of the Services in our Churches

Day		Time	Church	Service
	MAY			
Sunday	3rd	9.15	St John's Buxton Hill	Holy Communion
Easter 5		9.15	St Peter's, Snelston	Holy Communion
		10.30	St Oswald's, Ashbourne	Holy Communion
		11.00	St Mary & St Barlock, Norbury	Holy Communion
		18.30	St Oswald's, Ashbourne	Evensong
Sunday	10th	9.00	St Oswald's, Ashbourne	Breakfast Church
Easter 6		9.15	St Mary's, Mappleton	Holy Communion
		10.30	St Oswald's, Ashbourne	Holy Communion
		18.30	St Oswald's, Ashbourne	Evensong
Thursday	14th	19.00	St Oswald's, Ashbourne	Holy Communion
Ascension				
Sunday	17th	9.15	St John's, Buxton Hill	Congregation Prayers
Easter 7		10.30	St Oswald's, Ashbourne	Holy Communion
		18.30	St Oswald's, Ashbourne	Choral Evensong
Sunday	24th	10.30	St Oswald's, Ashbourne	Holy Communion
Pentecost		0.67	St Oswald's, Ashbourne	Messy Church
		18.30	St Oswald's, Ashbourne	Evensong
Sunday	31st	10.30	St Oswald's, Ashbourne	Holy Communion
Trinity		16.00	Holy Trinity, Clifton	Family Patronal

ON LINE SERVICES

Daily Morning & Evening Prayer and Sunday Morning Service available on :

ashbournechurch.org.uk

WEDDING and BAPTISM ENQUIRIES

Please call Parish Office on 01335 343052

PASTORAL CONTACT

To speak to a member of the Clergy call 01335 664159

Readings - 3rd May: Easter 5

Genesis 8.1-19

When the flood water begins to abate, the ark rests, according to ancient tradition, on Mount Ararat. God reassures Noah that his family and all the animals may now leave.

But God remembered Noah and all the wild animals and all the domestic animals that were with him in the ark. And God made a wind blow over the earth, and the waters subsided; the fountains of the deep and the windows of the heavens were closed, the rain from the heavens was restrained, and the waters gradually receded from the earth. At the end of one hundred and fifty days the waters had abated; and in the seventh month, on the seventeenth day of the month, the ark came to rest on the mountains of Ararat. The waters continued to abate until

the tenth month; in the tenth month, on the first day of the month, the tops of the mountains appeared.

At the end of forty days Noah opened the window of the ark that he had made and sent out the raven; and it went to and fro until the waters were dried up from the earth. Then he sent out the dove from him, to see if the waters had subsided from the face of the ground; 9 but the dove found no place to set its foot, and it returned to him to the ark, for the waters were still on the face of the whole earth. So he put out his hand and took it and brought it into the ark with him. He waited another seven days, and again he sent out the dove from the ark; and the dove came back to him in the evening, and there in its beak was a freshly plucked olive leaf; so Noah knew that the waters had subsided from the earth. Then he waited another seven days, and sent out the dove; and it did not return to him any more.

In the six hundred and first year, in the first month, on the first day of the month, the waters were dried up from the earth; and Noah removed the covering of the ark, and looked, and saw that the face of the ground was drying. In the second month, on the twenty-seventh day of the month, the earth was dry. Then God said to Noah, 'Go out of the ark, you and your wife, and your sons and your sons' wives with you. Bring out with you every living thing that is with you of all flesh—birds and animals and every creeping thing that creeps on the earth—so that they may abound on the earth, and be fruitful and multiply on the earth.' So Noah went out with his sons and his wife and his sons' wives. And every animal, every creeping thing, and every bird, everything that moves on the earth, went out of the ark by families.

Acts 7.55-end

Stephen, one of the deacons appointed to help the apostles care for the Greek-speaking widows, is arrested and at his trial, as he dies he prays and forgives his killers.

Standing before the High Priest and the council, filled with the Holy Spirit, he gazed into heaven and saw the glory of God and Jesus standing at the right hand of God. 'Look,' he said, 'I see the heavens opened and the Son of Man standing at the right hand of God!' But they covered their ears, and with a loud shout all rushed together against him. Then they dragged him out of the city and began to stone him; and the witnesses laid their coats at the feet of a young man named Saul. While they were stoning Stephen, he prayed, 'Lord Jesus, receive my spirit.' Then he knelt down and cried out in a loud voice, 'Lord, do not hold this sin against them.' When he had said this, he died.

John 14.1-14

In his gospel, John used the setting of Jesus's last supper with his disciples, for expounding Jesus's teaching and answering their questions. John included two of Jesus's 'I am' sayings which gave a pictorial way of understanding his true nature.

‘Do not let your hearts be troubled. Believe in God, believe also in me. In my Father’s house there are many dwelling-places. If it were not so, would I have told you that I go to prepare a place for you? And if I go and prepare a place for you, I will come again and will take you to myself, so that where I am, there you may be also. And you know the way to the place where I am going.’ Thomas said to him, ‘Lord, we do not know where you are going. How can we know the way?’ Jesus said to him, ‘I am the way, and the truth, and the life. No one comes to the Father except through me. If you know me, you will know my Father also. From now on you do know him and have seen him.’

Philip said to him, ‘Lord, show us the Father, and we will be satisfied.’ Jesus said to him, ‘Have I been with you all this time, Philip, and you still do not know me? Whoever has seen me has seen the Father. How can you say, “Show us the Father”? Do you not believe that I am in the Father and the Father is in me? The words that I say to you I do not speak on my own; but the Father who dwells in me does his works. Believe me that I am in the Father and the Father is in me; but if you do not, then believe me because of the works themselves. Very truly, I tell you, the one who believes in me will also do the works that I do and, in fact, will do greater works than these, because I am going to the Father. I will do whatever you ask in my name, so that the Father may be glorified in the Son. If in my name you ask me for anything, I will do it.’

Collect

Risen Christ, your wounds declare your love for the world
and the wonder of your risen life:
give us compassion and courage to risk ourselves for those we serve,
to the glory of God the Father.

Post Communion

Eternal God,
whose Son Jesus Christ is the way, the truth, and the life:
grant us to walk in his way, to rejoice in his truth,
and to share his risen life;
who is alive and reigns, now and for ever.

Evensong

Zechariah 4.1-10

The angel who talked with me came again, and wakened me, as one is wakened from sleep. He said to me, 'What do you see?' And I said, 'I see a lampstand all of gold, with a bowl on the top of it; there are seven lamps on it, with seven lips on each of the lamps that are on the top of it. And by it there are two olive trees, one on the right of the bowl and the other on its left.' I said to the angel who talked with me, 'What are these, my lord?' Then the angel who talked with me answered me, 'Do you not know what these are?' I said, 'No, my lord.' He said to me, 'This is the word of the LORD to Zerubbabel: Not by might, nor by power, but by my spirit, says the LORD of hosts. What are you, O great mountain? Before Zerubbabel you shall become a plain; and he shall bring out the top stone amid shouts of "Grace, grace to it!"'

Moreover, the word of the LORD came to me, saying, 'The hands of Zerubbabel have laid the foundation of this house; his hands shall also complete it. Then you will know that the LORD of hosts has sent me to you. For whoever has despised the day of small things shall rejoice, and shall see the plummet in the hand of Zerubbabel.'

'These seven are the eyes of the LORD, which range through the whole earth.'

Revelation 21.1-14

Then I saw a new heaven and a new earth; for the first heaven and the first earth had passed away, and the sea was no more. And I saw the holy city, the new Jerusalem, coming down out of heaven from God, prepared as a bride adorned for her husband. And I heard a loud voice from the throne saying,

'See, the home of God is among mortals.

He will dwell with them; they will be his peoples, and God himself will be with them; he will wipe every tear from their eyes. Death will be no more; mourning and crying and pain will be no more, for the first things have passed away.'

And the one who was seated on the throne said, 'See, I am making all things new.' Also he said, 'Write this, for these words are trustworthy and true.' Then he said to me, 'It is done! I am the Alpha and the Omega, the beginning and the end. To the thirsty I will give water as a gift from the spring of the water of life. Those who conquer will inherit these things, and I will be their God and they will be my children. But as for the cowardly, the faithless, the polluted, the murderers, the fornicators, the sorcerers, the idolaters, and all liars, their place will be in the lake that burns with fire and sulphur, which is the second death.'

Then one of the seven angels who had the seven bowls full of the seven last plagues came and said to me, 'Come, I will show you the bride, the wife of the Lamb.' And in the spirit he carried me away to a great, high mountain and showed me the holy city Jerusalem coming down out of heaven from God. It has the glory of God and a radiance like a very rare jewel, like jasper, clear

as crystal. It has a great, high wall with twelve gates, and at the gates twelve angels, and on the gates are inscribed the names of the twelve tribes of the Israelites; on the east three gates, on the north three gates, on the south three gates, and on the west three gates. And the wall of the city has twelve foundations, and on them are the twelve names of the twelve apostles of the Lamb.

Please remember in your prayers this week

Those who are unable to be with us in church, including Diana & Edmund Urquhart, Linda Torr, Arthur and Barbara Williams, the Reverend Joe and Mrs. Gillie Lister..

Those who are ill, especially Graham Price, Pam Phillips, Reina Hammond and Neil Burns.

The recently bereaved, especially the relatives and friends of Cedric Stevenson, Helen Smith and John Tomkinson.

Areas of conflict: the Ukraine, the Middle East and too many others.

Our local churches.

Our Ministry Team: Dwayne, Maggie, Nigel & Lynda

Music for May at St Oswald's

MUSIC	FOR	May	2026	Year A
SUNDAY	3rd	5th Sunday of Easter	White	
10.30		449 God of mercy, God of grace 369 All people that on earth do dwell 538 O Jesus I have promised Like a candle flame/Kendrick 474 Immortal invisible God only wise 590 The kingdom is upon you	(20th C)	6.30 O come ye servants of the Lord/Tye 455 Guide me O thou great Redeemer Psalm 147 Mag and ND G 343 O perfect love Day by Day/How 11 As now the sun's declining rays
SUNDAY	10th	6th Sunday of Easter	White	Rogation Sunday
10.30		253 For the beauty of the earth 271 God whose form is all creation 262 O Lord my God The Heavens declare the Creator's glory/Beethoven Seek ye first the kingdom of God 437 Go forth and tell! (Woodlands)		6.30 Grant we beseech Thee/Shaw 401 Come let us join our cheerful songs Psalm 36 vs 5-12 Mag and ND H 268 Timeless love! We sing the story The mountains shall bring peace/J Forbes L'Estrange 22 The day thou gavest
THURSDAY	14th	Ascension Day		
7.00		167 Hail the day 490 Jesus shall reign 163 All hail the power Rejoice the Lord is King/Archer 166 Crown him with many crowns		
SUNDAY	17th		White	
10.30		167 Hail the day 172 The head that once was crowned with thorns 163 All hail the power God is gone up/Croft 612 We have a gospel to proclaim 166 Crown him with many crowns	6.30	Choral Evensong Canticles; Murrill in E Responses; Sanders Rejoice the Lord is King/Archer 398 Christ triumphant Psalm 47 612 We have a gospel to proclaim O thou the central orb/Wood 163 All hail the power
SUNDAY	24th	PENTECOST/WHITSUN	Red	
10.30		192 On the day of Pentecost 383 Be still for the presence of the Lord... 176 Come gracious Spirit Come down O Love Divine/Harris 174 Breathe on me breath of God...tune Trentham 175 Come down O Love divine	6.30	Come Holy Ghost/T.Attwood 182 Gracious Spirit Holy Ghost Psalm 67 Mag and ND I 176 Come gracious Spirit Come down O Love Divine/Harris 184 Holy Spirit truth divine
SUNDAY	31st	TRINITY	White	
10.30		Little Organ Mass/Haydn 200 Affirm anew the threefold name 202 Holy Holy Holy 418 Father Lord of all creation Sanctus/F.Schubert 426 Firmly I believe 267 Thou whose almighty word	4.00	Clifton Patronal Festival Songs of Praise No evening service at St Oswald's

Dates for your Diary

- Sunday 10th May @ 09:00 - Breakfast Church
- Tuesday 12th May @ 16:00 - Ossie's Kitchen
- Wednesday 13th May @ 10:00 - Carers Count at Fairways Garden Centre Restaurant
- Thursday 14th May @ 19:00 - Ascension Day Holy Communion
- Tuesday 19th May @ 13:00 - Ossie's Potters
- Tuesday 26th May @ 16:00 - Ossie's Kitchen
- Sunday 21st June @ 15:00 - New Curate Welcome Tea

Get Involved

- Saturday 1st August - Young Adults Pilgrimage to Taizé

See [Forthcoming Events](#) on the website.

Rachel Knight, our new curate

All are invited to come and welcome the new curate, Rachel Knight, Sunday 21st June at 15.00 for a Welcome Tea at St Oswald's. (We will also need help with cakes, please)! She will be ordained at Derby Cathedral that morning at their 10.45am service. Please keep her in your prayers.



There are many men and women in our community who are caring for a loved one and it is very seldom realised just how little recognition they get for fulfilling such an important but lonely role. If you, or someone you know, is caring for a loved one, for whatever reason, and would like the chance just to have somewhere you can have an hour or so respite with coffee and chat with people who understand the challenges you face daily, then come along to 'Carers Count'.

'Carers Count' meet on the first Wednesday of every month between 10am and 12 noon at St Oswald's Church Hall in School Lane, Ashbourne where you are assured of a warm welcome, a friendly face and a listening ear.

We work with Derbyshire Carers Association who give advice regarding practical support to which one might be entitled. They also support our meetings with the occasional special event.

For more information and to let us know that you would like to come along, then call Maggie or Nigel on 01335 664159

Community Café in Ashbourne

OSSIE'S KITCHEN



Why eat alone ?

**Come and join us for a three course meal
in the company of others**

Family friendly

Open to all between 4pm and 6pm

On Tuesdays

March 31st, and 14th, 28th April

St Oswald's Church Centre, School Lane, DE6 1AN

Suggested donations of

£5 per adult and £2 per child

For enquiries and to request transport

call Ossie's Kitchen on 01335 664159



**St Oswald's Church
Derbyshire CC
Fare Share**



 Ashbourne Group
of Churches

JOIN US FOR
**BREAKFAST
CHURCH**
AT ST OSWALD'S, ASHBOURNE

EVERY SECOND SUNDAY FROM 09:00 - 09:45

Bacon butties, cereal, toast and
a short all age service

A warm welcome is awaiting you.

ashbournechurch.org.uk

V&A at Wedgwood

Thursday 25th June.

Coach outing to V&A at Wedgwood and then onto Trentham gardens for lunch. Stroll round the gardens, explore the lake and wire Fairies, take a trip down the lake on the boat or just sit and watch the world go by. Don't forget you can also look around the shopping village and explore the garden centre.

Coach will leave Ashbourne at 9.30 and return approx. 4.00.

Cost - £25 to include the coach and admission to Trentham gardens.

Please email gillianelliott@live.co.uk for a place.



**Thursday 25th June
Coach Outing to
V&A at Wedgewood**



**Continuing to
Trentham Gardens**



**The coach will leave Ashbourne at 9.30am
and return at approximately 4.00pm**

**Cost - £25 to include the coach and
admission to Trentham gardens**

**Please email gillianelliott@live.co.uk for a
place.**

Car Boot and Table Top Sale

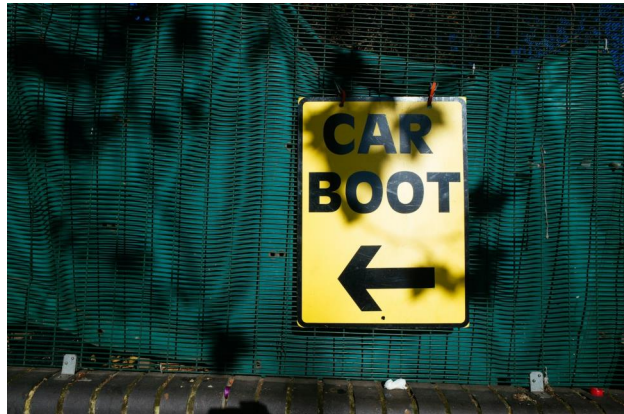
Saturday 4th July.

St Oswald's church hall and car park.

Car boot and table top sale.

More information to follow.

Please check the newsletter for further details.



Church Groups

Walking and Rambling with St Oswalds

St Oswald's has a choice of two walking groups.

The Ramblers group meets on the 2nd Monday of the month, starts walking at 10.00am and covers approximately 5 miles.

The Walking group meets on the last Saturday of the month, starts walking at 9.30am and covers approximately 10 miles.

Ramblers Group Dates (All rambles start at 10 a.m.)

- Monday 11th May 2026. Starting at Parwich car park, grid ref 191 542.

Walking Group Dates (All walks start at 9:30 a.m.)

- Saturday 25th April 2026

Rogation Sunday is May 10th. With this in mind Saturday 25th April will be the nearest walking group. The walk will start at Norbury church and visit all churches in the Ashbourne Group of Churches visiting Norbury, Snelston, Clifton, Mappleton, St Johns and finishing at St Oswalds. There is the option to drive to Norbury and leave some cars in St Oswald's car park or use the Swift bus from Ashbourne (8.40) to Ellastone (Dove street 8.52) and walk to Norbury church.

Gill

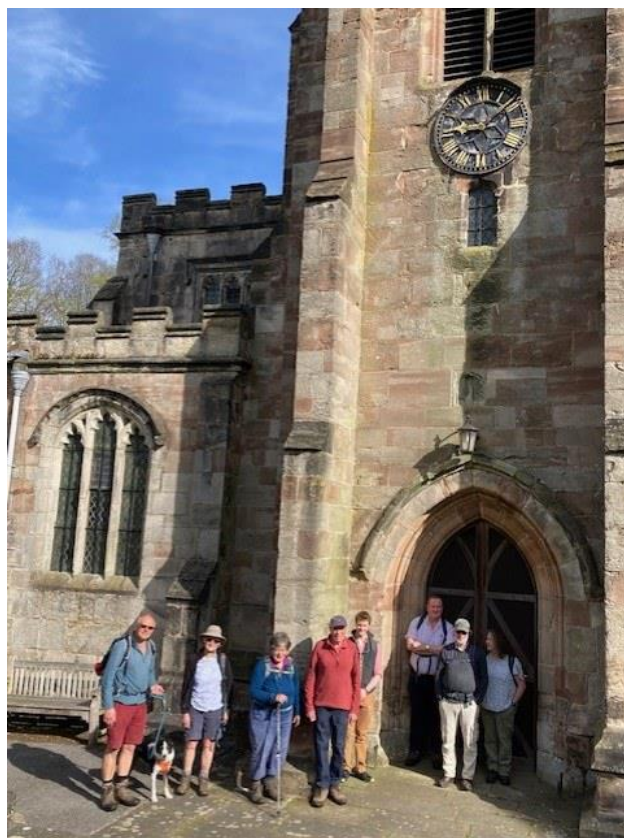
Email : paulgillelliott@outlook.com

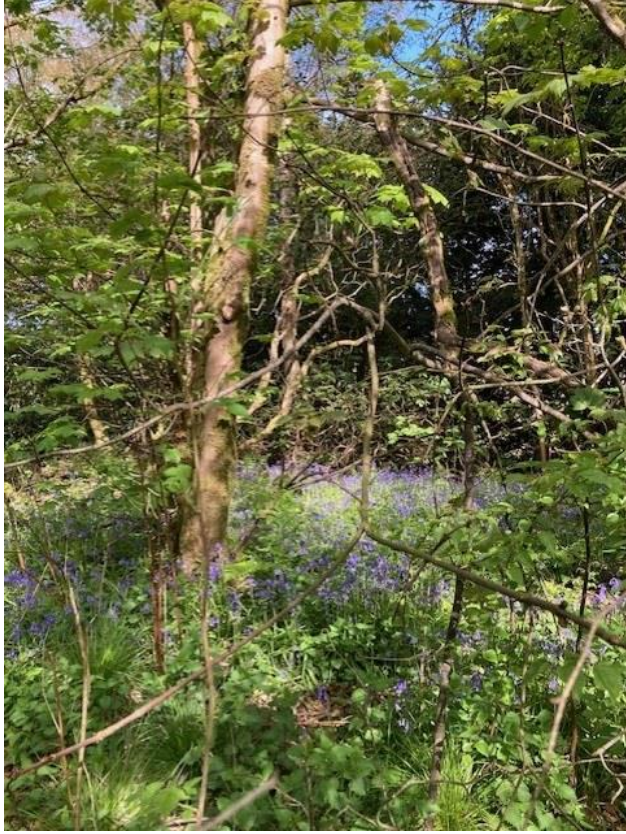
April Walk

It was an early start for the walking group this month catching the 8.40 swift bus to Dove Street, Ellastone. With the April walk being the nearest walk to Rogation Sunday, the group completed an “adapted” rogation walk. Instead of walking the parish boundary, the group visited all 6 churches in the Ashbourne Group. A short walk took us to Norbury for the first church of the day, then, following the river Dove and Old Slade Lane, we headed to Snelston church.

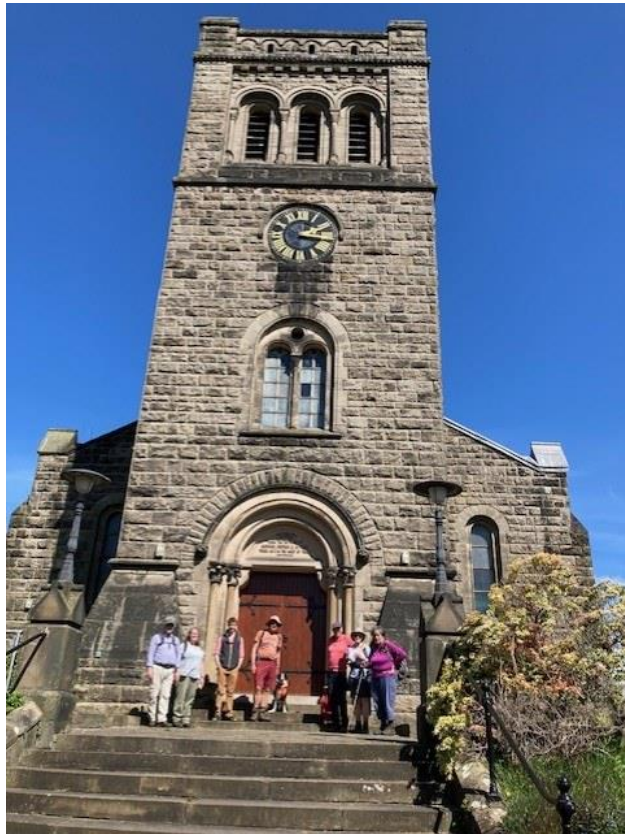
Heading out of Snelston we crossed the estate and passed through the clapper stile towards the Margery Bower tumulus. It was then downhill to Clifton Church for a well earned coffee stop. We crossed the fields to the Royal Oak where we rejoined the River Dove to Mappleton. A quick lunch stop at Mappleton and it was onward and upward over the hill to St John’s and then to St Oswald's.

A great walk, good weather and a lovely route. We were pleased to be joined by some new members to the group.











Giving and Donations

Donate to St Oswald's

If you would like to set up a regular payment to St Oswald's Church then you can do so through the Parish Giving Scheme (PGS).. You can find out more information on [the PGS website](#) where you can also set up a regular payment.

Alternatively you can telephone the Parish Giving Scheme on 0333 002 1260 to set up a payment. (The PGS code for St Oswald's Church is 120612186).



Give a Little

St Oswald's church is open every day of the week. If you would like to make a donation to the work of St Oswald's Church you can do so from the [Give a Little website](#).



Easyfundraising

St Oswald's Church is registered with easyfundraising, which means you can raise FREE donations for us every time you shop online. Since joining we have raised over £400, and that is with only 27 supporters.

Over 7,000 brands will donate to us when you use easyfundraising to shop with them – at no extra cost to yourself! These donations really mount up and make a BIG difference to us, so we'd really appreciate it if you could take a moment to sign up and support us. It's completely FREE and only takes a moment. You can find our easyfundraising page by [>>> CLICKING HERE](#)



Safeguarding

Keeping People Safe

We are committed to ensuring that our church is a safe place for everyone and take the safeguarding of children and vulnerable adults very seriously. We adhere to safeguarding rules laid down by the Church of England and the diocese of Derby.

Report a Safeguarding Concern: Protecting children, young people and vulnerable adults is the responsibility of us all, whether they are in the communities in which we live or part of our

Christian family. If you have a concern about a child, young person or adult who may be at risk of harm please speak to the parish safeguarding coordinator.

The contact details are:

Celia Dickinson, Parish Safeguarding Officer (PSO)

Mobile: 07754 883935

If you have concerns about a member of the clergy or an employee of the church please contact the Diocesan Safeguarding. To confidentially report a safeguarding concern please complete the [Safeguarding Concern Form](#) or call 01332 388678. You can also report any concerns to the Police or Social Care. The important thing is that your concerns are shared with someone in a position to help.

Footnotes

If you have any comments about this newsletter or wish to submit any material to be included, please email: parishoffice@ashbournechurch.org.uk.

If you have not already subscribed to receive an email reminder when a new update to the newsletter is available, you can [subscribe here](#).

To keep up with the latest church news, please follow us on our [Facebook Page](#).

We now have a new [Instagram](#) account too.
